

BUILD

# ICON

Innovative  
Architectural  
Concept

Design | Supervision | Sustainability | Management

DESIGN



SUPERVISION



SUSTAINABILITY



MANAGEMENT

ICON

ARCHITECTS & ENGINEERS

FOUNDER MESSAGE.....	04
ABOUT US.....	05
OUR SERVICES.....	06
• MULTIDISCIPLINARY DESIGN.....	06
• SUPERVISION.....	07
• SUSTAINABILITY.....	08
OUR TEAM.....	09
ORGANIZATION CHART.....	10
QUALITY & PROFICIENCY.....	11
ICON AT A GLANCE .....	14
ICON MASTER PLANNING .....	16
• MIXED USE DEVELOPMENTS.....	22
• MALL.....	26
• HORSE STABLES.....	28
• SPORTS BUILDINGS.....	30
• HEALTHCARE FACILITIES.....	31
• EDUCATIONAL BUILDINGS.....	32
• RELIGIOUS BUILDING/MOSQUE.....	33
• HOTELS & OFFICES.....	34
• VILLA COMPOUNDS.....	36
• COMMERCIAL & RESIDENTIAL.....	40
• RESIDENTIAL BUILDINGS.....	46
• PRIVATE HOMES / MAJLIS.....	52
• PRIVATE HOMES MODERN.....	56
• INTERIOR DESIGN.....	60
OUR CLIENTS.....	63



Building environment holds most of human activities; they are the places we live in, entertain, and succeed. Buildings have a significant impact on our lives and the way we interact. Through Architecture we create people`s best memories. There is a huge opportunity to create well-differentiated projects in the local market, already, we're working on giving a well-placed buildings elevated, curated design features in these sought-after areas, appealing to a flex-working prosperous market creating new urban hubs.

FOUNDER MESSAGE



**Naser Tabouni**  
Founder and General Manager





# ABOUT US

ICON is a licensed '**GRADE A**' consulting Engineering firm based in Doha/Qatar, specializing in multi-disciplinary design and planning. ICON successfully accomplished many different building typologies ranging from private homes, apartment buildings, educational facilities, health care facilities, sports buildings, industrial buildings, mixed-use developments, and urban planning projects. Guided by determined optimism, we believe the power of design can spark positive change and create a future that promotes equity, resilience, and well-being for everyone. For the exact number of projects completed by our company up to date please check our website at [www.icon-qa.com](http://www.icon-qa.com).

## OUR VISION

Our vision is to be viewed as a respected architectural firm, strengthening communities through intelligent, innovative, and cost-effective architectural environmental designs.

## OUR MISSION

Our mission is to be viewed as a respected architectural and engineering firm and to provide high-quality design and engineering services to our clients with honesty and integrity. Since we believe that Architecture can change people's life, our mission comes to help our clients reach their full potential, achieve their goals and live their unforgettable moments with their loved ones.

**We Use Design to Create a Better World**

ICON

# D Multi-disciplinary DESIGN

Architecture is the cornerstone of ICON design practice. We can design any type of building with an optimum spacing layout that fulfills clients' needs, with extraordinary results.

We also offer structural, safety, electro-mechanical, and circulation study that comply with local regulations and follow them up with local authorities until obtaining building permit approvals.

We work collaboratively with clients, communities, and end users to create buildings that work well on every level, inside and outside.

We deliver them with a consistently high standard of service. Our designs are not only visually appealing but also sustainable, comfortable, flexible, secure, and efficient.

We identify design solutions uniquely tailored to the client's needs.

Our integrated team brings diverse areas of expertise to deliver insights that drive rich experiences and the highest return value to their real estate investment.

Our designs enliven the city's built environment and respect the local heritage and culture.

We're dedicated to creating environments where people live happier and healthier lives. To work collaboratively with our clients, engaging, until we achieve the client's goals and expectations.

This is how we define design excellence. Performance and aesthetics go hand in hand. We look at projects holistically, because we know that the investment value of the project and the great design can go in parallel.





ICON

# S Incessant SUPERVISION

We provide the supervision service to achieve our client's target deliverables, "better quality, shortest time and less cost" through a special talented selected team in all trades led by qualified projects managers, to satisfy the work needs throughout all stages of the project from the pre-tender or post-tender stage passing through the construction stage till testing & commissioning and handing over to the authorities then to the client, using all professional tools and techniques to achieve the client deliverables and final goal.

ICON

# S Renewable SUSTAINABILITY

We see sustainable design as a win-win deal, good for business, people, and the new generations. We believe that decisions made today affect our lives tomorrow. Today, Qatar is the leading country in the Middle East, realizing the importance of sustainability, created a very strong performance-based sustainability system GSAS. We are so proud to be a GSAS certified service provider applying the sustainability principles in our designs, and cooperating with other consultants to achieve sustainability criteria in their projects. We assessed many projects in different typologies that could achieve GSAS certification with different star ratings.

For the exact number of projects achieved GSAS certification up to date please check our website at [www.icon-qa.com](http://www.icon-qa.com).



Dr. Yousef Mohammed Alhorr  
Founding Chairman





## Prudent MANAGEMENT

The Source of Our Strength is Our Team. We are stronger because of our collaborative spirit, our dedication, our diverse perspectives, and our effective communication. By working as an interconnected firm, we're able to make the greatest impact in the market, as we continue to tackle the ongoing challenges.



**Naser Tabouni**  
General Manager



**Nisreen Tabuni**  
QA/QC/Sustainability Manager



**Ahmed Zabady**  
Supervision Head

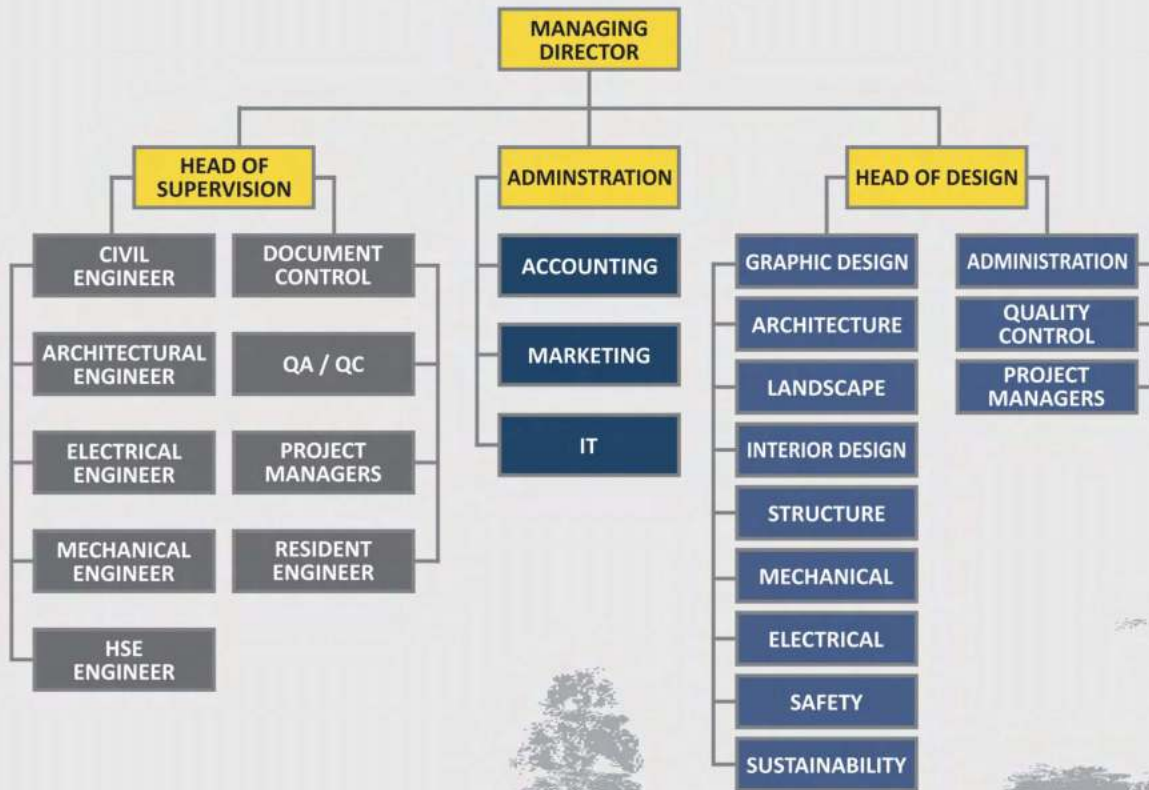


**Mohamed Fahmi**  
Design Head

# OUR

# TEAM





ICON

# QUALITY CONTROL

ICON established internal multi-disciplinary measures and work-flow procedures to achieve high quality, efficiency, and accuracy, such as:

- Setting up drafting guidelines and checklists up to industry standards.
- Continuous coordination with the client to achieve the design intent.
- Starting Coordination very early between different disciplines and at each stage of the design.
- Hierarchy of team positions and clear definition of responsibilities.
- Review and audit procedures are done by team leaders at each milestone throughout the project time line.
- Ensure that Drawings and Specifications are complementary.
- Follow up on international filing and documentation standards that ensure easy access of any document.







ICON

## PROFICIENCY

### AREA OF EXPERTISE

- Planning
- Architecture
- Interior Design
- Structural
- Electromechanical
- Sustainability Assessment (LEED & GSAS)
- Transportation Analysis

### PROJECTS TYPOLOGY

ICON has excellent experience in different building typologies such as:

- Commercial Buildings (Shops & Offices)
- Mixed-Use Projects
- Educational Buildings
- Sports Buildings
- Residential private homes and buildings
- Hotel Buildings
- Religious Buildings
- Health Care Centres



## SOFTWARE

ICON team uses the best computer programs that communicate the Client's needs. We are keen on being updated in the field of design tools to enhance the quality of our products. We are using different 2D and 3D softwares to get the most presentable and accurate results.

- AutoCAD
- Sketch-up
- 3D-Max
- Revit
- Lumion
- Photoshop CC



PAGE 22-25



Mixed-Use Developments

ICON

# AT A GLANCE

PAGE 28-29

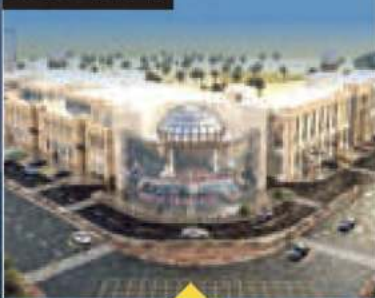


Horse Stables

We have accumulated a vibrant projects portfolio that we are proud of, spanning across public and private sectors in Qatar, from master plans, commercial, mixed-use, hotels, residential buildings, private homes, clinics, schools, malls, and horse stables.

Our showcase reflects our magnitude and particular style and talent. You can visit our website [www.icon-qa.com](http://www.icon-qa.com) to see more projects we did.

PAGE 26-27



Malls

PAGE 30



Sports buildings

PAGE 31



Health Care Buildings

PAGE 32



Educational Buildings



PAGE 33



Religious Building/Mosque

PAGE 36-39



Villa Compounds

PAGE 52-55



Majlis

PAGE 34



Hotels

PAGE 40-45



Commercial & Residential Buildings

PAGE 56-59



Private Home Modern

PAGE 35



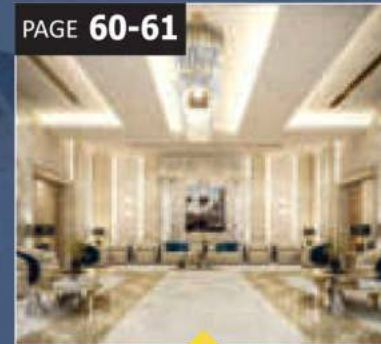
Offices

PAGE 46-51



Residential Buildings

PAGE 60-61



Interior Design





ICON



MASTER  
PLANNING





MIXED USE DEVELOPMENT, IZGHAWA QATAR, TOTAL B.U.A: 100,405.08m<sup>2</sup>







ICON



MASTER  
PLANNING







## CHALETS AND RESTAURANTS

G+M, COMMERCIAL & RECREATIONAL DEVELOPMENT  
WEST BAY, QATAR

TOTAL B.U.A: 17,939.40m<sup>2</sup>





ICON

**M**ASTER  
PLANNING





G+M+1, MIXED USE DEVELOPMENT SHOPS & OFFICES AT AL RAYYAN, QATAR, TOTAL B.U.A: 17,139.46 m<sup>2</sup>







ICON

**M**IXED USE  
BUILDINGS





# THE ARCH

B+G+2, MIXED USE BUILDING  
SHOPS & OFFICES  
TOTAL B.U.A: 9,424.5m<sup>2</sup>





B+G+2, MIXED USE BUILDING CLINICS, SHOPS & OFFICES, TOTAL B.U.A: 26,192.75m<sup>2</sup>







B+G+M+1, MIXED USE DEVELOPMENT BUILDING AT AL GHARAF, TOTAL B.U.A: 14,423.50m<sup>2</sup>







MIXED USE COMMERCIAL & SERVICES DEVELOPMENT,  
ASIA MALL AT AL-DAAYEN, TOTAL B.U.A: 49,102.6m<sup>2</sup>







B+G+M+1, MALL AT UM AL AMMAD, TOTAL B.U.A: 17,250.95m<sup>2</sup>







ICON  
**H**ORSE  
STABLES



AL-SHAQAB EQUESTRIAN EXTENSION





ICON

SHOOTING  
RANGE



## AL HADAF SHOOTING RANGE

B+G, SHOOTING RANGE BUILDING

ASPIRE ZONE, QATAR

TOTAL B.U.A: 3,420.25m<sup>2</sup>





B+G+2, MEDICAL CLINICS COMPLEX AT AL MAMOURA, TOTAL B.U.A : 4,444.40m<sup>2</sup>







B+G+2, SCHOOL AT AL MARKYIA, TOTAL B.U.A: 12,595m<sup>2</sup>







SINGLE STOREY MOSQUE BUILDING, PART OF MIXED-USE COMPLEX AT IZGHAWA, QATAR, TOTAL B.U.A: 1,475.39m<sup>2</sup>



ICON

**H**OTEL  
DEVELOPMENT

MIXED USE DEVELOPMENT, 3B+G+M+14+ TWO BUILDING - HOTEL & RESIDENTIAL BUILDING  
AT AL-MIRQAB, QATAR, TOTAL B.U.A: 35,545.95m<sup>2</sup>





G+1, OFFICE BUILDING AT AL WAAB BAYYAN, TOTAL B.U.A: 1,207m<sup>2</sup>



ICON



VILLA

COMPOUND







## TOURIST CHALET

12 NOS., G+1+PH,  
VILLA+CLUB HOUSE+AMENITIES  
AT UM-SLAL, QATAR  
TOTAL B.U.A: 8,035m<sup>2</sup>



ICON

VILLA  
COMPOUND

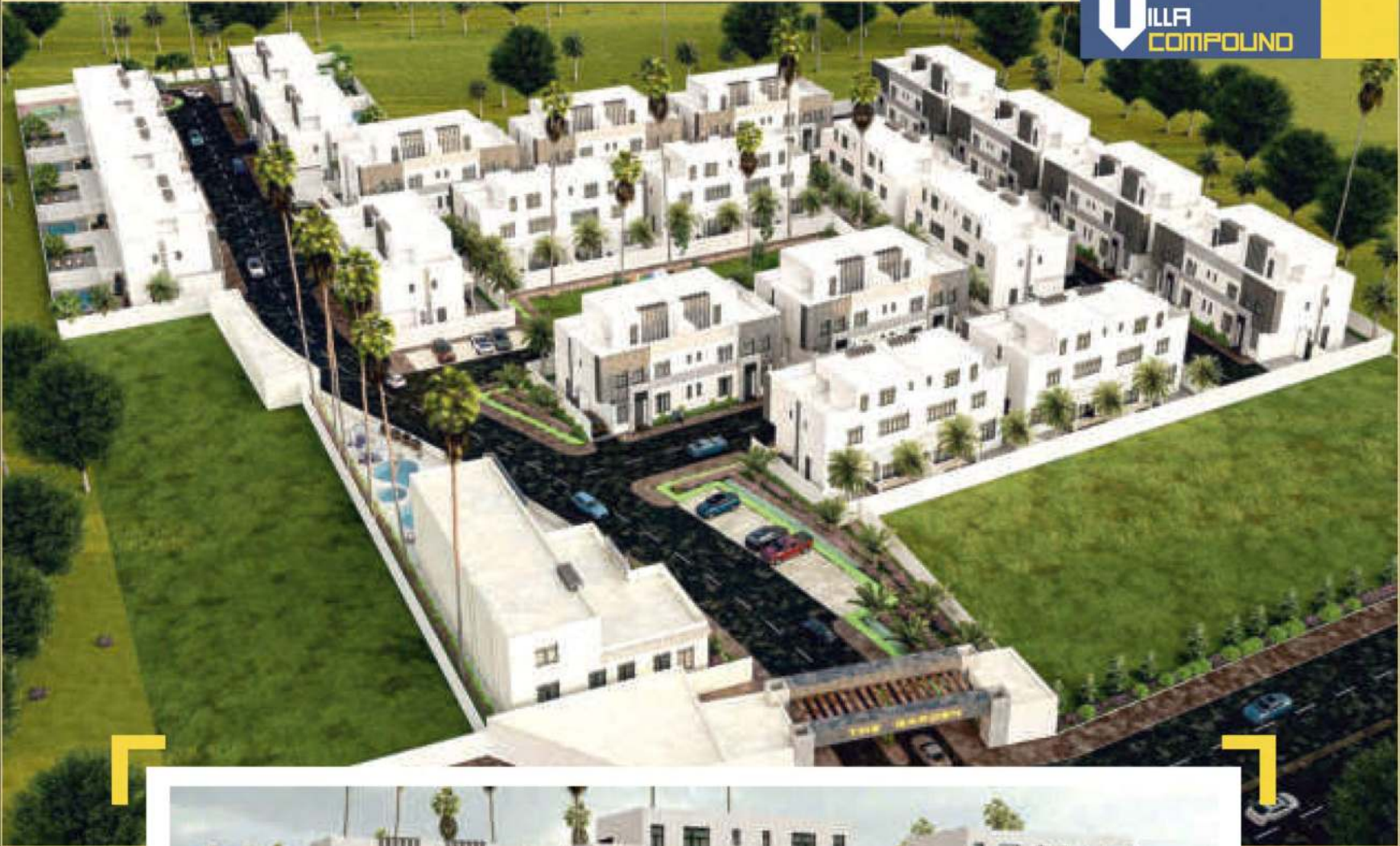


79 NOS., G+1+PH, VILLA COMPLEX AT BAAYA, AL RAYYAN, TOTAL B.U.A: 27,277m<sup>2</sup>



12 NOS., G+1+PH, VILLA+CLUB HOUSE+AMENITIES AT UM-SLAL, QATAR, TOTAL B.U.A: 8,035m<sup>2</sup>





42 VILLA COMPOUND EACH CONSIST OF G+1+PH AT AI RAYYAN, TOTAL B.U.A: 15,125.26m<sup>2</sup>





ICON

**C**OMMERCIAL &  
RESIDENTIAL  
BUILDINGS





G+M+2, COMMERCIAL &  
RESIDENTIAL BUILDING  
AL-SALIYA  
TOTAL B.U.A: 44,287.65m<sup>2</sup>





B+G+5, COMMERCIAL & RESIDENTIAL BUILDING,  
TOTAL B.U.A: 10,593.35m<sup>2</sup>

2B+G+M+5,  
COMMERCIAL & RESIDENTIAL BUILDING,  
FOX HILLS, LUSAIL CITY,  
TOTAL B.U.A: 15,309.15m<sup>2</sup>



2B+G+M+5,  
COMMERCIAL & RESIDENTIAL BUILDING,  
MU/B02, FOX HILLS, LUSAIL CITY,  
TOTAL B.U.A: 15,309.15m<sup>2</sup>





2B+G+6, COMMERCIAL & RESIDENTIAL BUILDING,  
MU-B03, FOX HILLS, LUSAIL  
TOTAL B.U.A: 15,7560m<sup>2</sup>



2B+G+6, COMMERCIAL & RESIDENTIAL BUILDING,  
FOX HILLS, LUSAIL  
TOTAL B.U.A: 1,576.60m<sup>2</sup>



B+G+4, MIXED USE, COMMERCIAL & RESIDENTIAL BUILDING, LANDMARK, TOTAL B.U.A: 20,826.35m<sup>2</sup>



2B+G+M+5, COMMERCIAL & RESIDENTIAL BUILDING, MU-C06, FOX HILLS, LUSAIL  
TOTAL B.U.A: 17,500.85m<sup>2</sup>





2B+G+M+10+ROOF  
RESIDENTIAL & COMMERCIAL BUILDING  
FAREEJ ABD AL-AZIZ, QATAR  
TOTAL B.U.A: 18,049.35m<sup>2</sup>



2B+G+8  
RESIDENTIAL & COMMERCIAL BUILDING  
AL SADD, QATAR  
TOTAL B.U.A: 16,492.20m<sup>2</sup>





MU-B01, 2B+G+M+5, FOX HILLS, TOTAL B.U.A: 16,150.69m<sup>2</sup>



B+G+5, COMMERCIAL & RESIDENTIAL BUILDING, TOTAL B.U.A: 7,291.75m<sup>2</sup>



ICON

**R**ESIDENTIAL  
BUILDINGS







## FLORESTA GARDENS

G+3P+AMENITIES FLOOR+15 RESIDENTIAL FLOOR+  
2 RESIDENTIAL PENTHOUSE FLOOR+ROOF FLOOR  
PEARL QATAR  
TOTAL B.U.A: 36,653.95m<sup>2</sup>





G+3, RESIDENTIAL BUILDING AT SEELYIA, QATAR,  
TOTAL B.U.A: 44,287m<sup>2</sup>



B+G+6, RESIDENTIAL BUILDING





3B+G+10+PH, RESIDENTIAL BUILDING  
AT AL JADEEDA, DOHA, TOTAL B.U.A: 9,442m<sup>2</sup>



3B+G+9, RESIDENTIAL BUILDING, R-2, AL-ERKYAH,  
LUSAIL CITY, TOTAL B.U.A: 14,302.73m<sup>2</sup>



3B+G+9+PH, EL-ARKYAH R-25, LUSAIL CITY  
TOTAL B.U.A: 13,711.95m<sup>2</sup>





B+G+4, RESIDENTIAL BUILDING,  
RES-D44, FOX HILLS, LUSAIL,  
TOTAL B.U.A: 7,123.65m<sup>2</sup>



B+G+4, RESIDENTIAL BUILDING,  
RES-D52, FOX HILLS, LUSAIL,  
TOTAL B.U.A: 7,311.17m<sup>2</sup>



B+G+4, RESIDENTIAL BUILDING,  
RES/D35, FOX HILLS, LUSAIL CITY,  
TOTAL B.U.A: 6,569.65m<sup>2</sup>





2B+G+M+5, MU-B02, FOX HILLS, LUSAIL, TOTAL B.U.A: 15,309.15m<sup>2</sup>



B+G+9+PH, AL-ERKYAH AT LUSAIL CITY, TOTAL B.U.A: 39,566m<sup>2</sup>

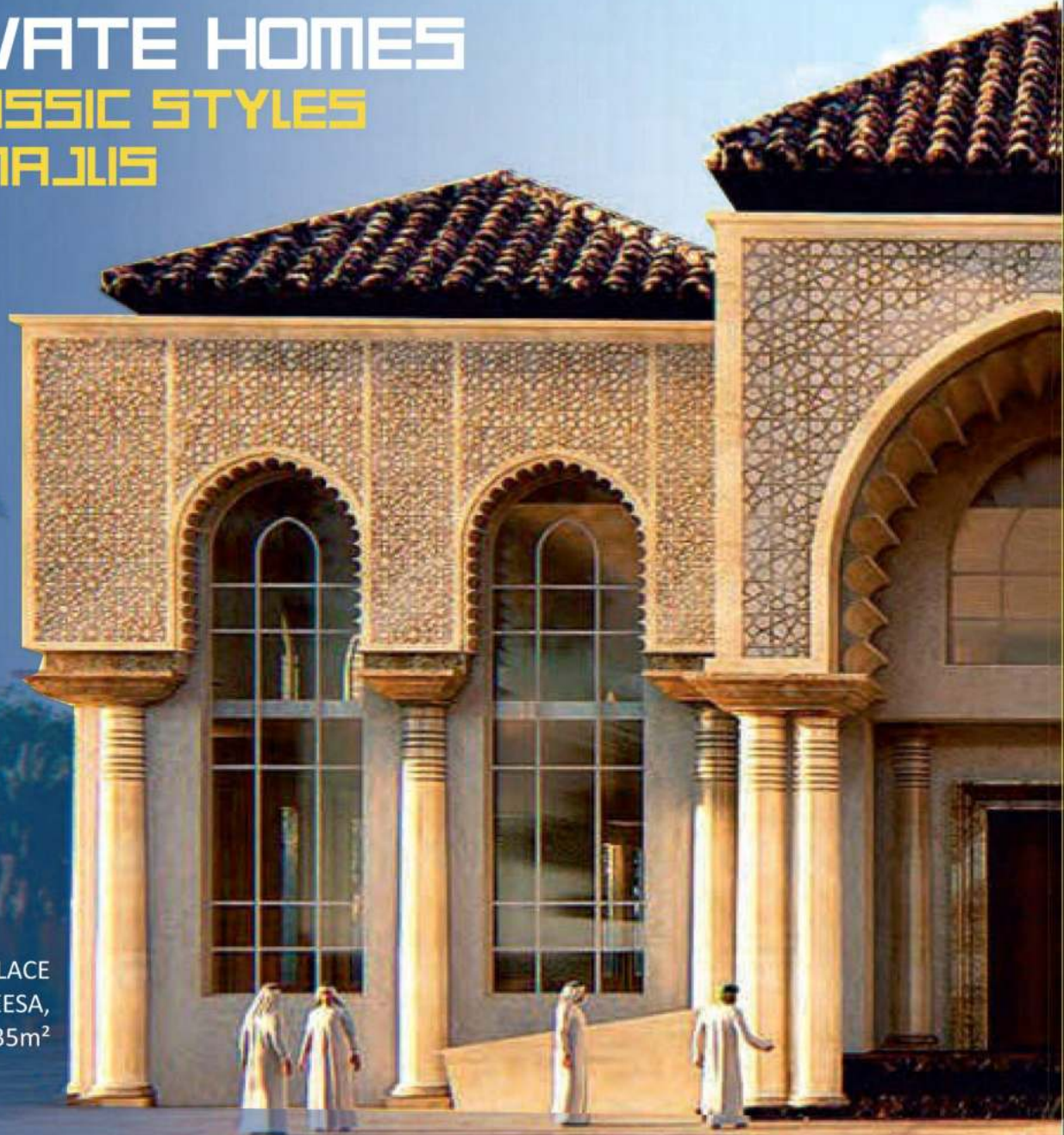


ICON

# PRIVATE HOMES

CLASSIC STYLES  
& MAJLIS

G+1+PH, PRIVATE PALACE  
AT AI KHEESA,  
TOTAL B.U.A: 1,552.35m<sup>2</sup>









ICON

PRIVATE HOMES  
CLASSIC STYLE  
& MAJLIS



G+1, VILLA & ANCILLARY, RAWDAT EGDAIM, DOHA-QATAR, TOTAL B.U.A: 794.35m<sup>2</sup>



G+1, VILLA AT AI SHAMAL, TOTAL B.U.A: 826.66m<sup>2</sup>



B+G+1, VILLA & MAJLES AT WATERFRONT, LUSAIL CITY, TOTAL B.U.A: 1,479.99m<sup>2</sup>





B+G+1+PH, VILLA & ANCILLARIES AT AL RAYYAN,  
TOTAL B.U.A: 2,173.03m<sup>2</sup>



ICON  
**P** RIVATE HOMES  
CLASSIC STYLE  
& MAJLIS

B+G+1+PH, & OUT MAJLIS AT AL RAYYAN,  
TOTAL B.U.A: 1,217.55m<sup>2</sup>



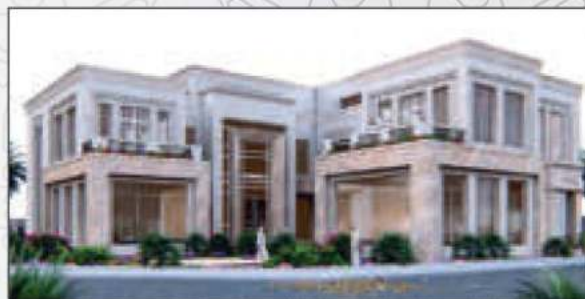
G+1+PH, VILLA & ANCILLARIES AT UMM SLAL,  
TOTAL B.U.A: 1,932.25m<sup>2</sup>



G+1+PH, VILLA & ANCILLARIES AT UMM GARN,  
TOTAL B.U.A: 1,053.60m<sup>2</sup>



G+1+PH, VILLA & ANCILLARIES  
AT LUBAIB AL DAYEN, TOTAL B.U.A: 1,166.71m<sup>2</sup>



B+G+1+PH, VILLA & ANCILLARIES AT AL WAKRA,  
TOTAL B.U.A: 1,496.20m<sup>2</sup>



G+1+PH, VILLA & ANCILLARIES AT LUSAIL,  
TOTAL B.U.A: 1,392.53m<sup>2</sup>



G+1+PH, PPALACE & ANCILLARIES AT AI RAYYAN,  
TOTAL B.U.A: 5,778.20m<sup>2</sup>





ICON

**P** RIVATE HOMES  
MODERN STYLE

B+G+1+PH, VILLA,  
ANCILLARY AL WUKAIR, DOHA-QATAR  
TOTAL B.U.A: 1,774.27m<sup>2</sup>



ICON

PRIVATE HOMES  
MODERN STYLE



PRIVATE MAJLIS, GROUND FLOOR AT AL KHEESA,  
TOTAL B.U.A: 356.70m<sup>2</sup>



B+G+1+PH, VILLA & ANCILLARIES AT LEGTAIFIYA,  
TOTAL B.U.A: 2,021.39m<sup>2</sup>



G+1+PH, VILLA AT ABU DLOOF, TOTAL B.U.A: 1,028.04m<sup>2</sup>





G+1+PH, VILLA & ANCILLARIES AT UM SLAL,  
TOTAL B.U.A: 1,240.21m<sup>2</sup>



G+1 VILLA & ANCILLARIES AT UM AL AMAD,  
TOTAL B.U.A: 1,358.60m<sup>2</sup>



B+G+1+PH, VILLA & ANCILLARIES AT UMM SLAL IZGHAWA,  
TOTAL B.U.A: 1,703.25m<sup>2</sup>



G+1+PH, VILLA & ANCILLARIES AT RAWDAT AL HAMAMA,  
TOTAL B.U.A: 1,210.90m<sup>2</sup>



B+G+1+PH, VILLA AT UMM SALAL,  
TOTAL B.U.A: 1,703m<sup>2</sup>



G+1+PH, VILLA AT RAWDAT AL HAMAMA,  
TOTAL B.U.A: 1,210m<sup>2</sup>



ICON  
INTERIOR  
DESIGNS















لجنة قبول وتصنيف المهندسين ومكاتب الاستشارات الهندسية

## شهادة قيد في سجل مكاتب الاستشارات الهندسية المحلية



وزارة البلدية  
Ministry of Municipality  
دولة قطر - State of Qatar

يرخص للسادة : ليكون للاستشارات الهندسية بالفئة : الأولى

بمزاولة مهنة الهندسة : هندسة مدنية - هندسة معمارية  
بالتخصصات : هندسة كهربائية - هندسة ميكانيكية  
برقم قيد: ٣٢٩/م

تاريخ القيد: ٢٠١٨/٠٤/٠٤ م سارية حتى تاريخ: ٢٠٢٤/٠٤/٠١ م

صدرت في: ٢٠٢٢/٠٢/٢٠ م

وزارة البلدية  
Ministry of Municipality  
دولة قطر - State of Qatar  
يعتمد  
لجنة قبول وتصنيف المهندسين  
ومكاتب الاستشارات الهندسية  
م/ خالد جمعة المرزوقي  
رئيس اللجنة

تليه : استناداً للمادة رقم (١١) من القانون رقم (٢٠٠٦/١٩) بموجب تعديده الفعلي خلال (٣٠) كانون يوماً من التمهيد ويترتب على عدم التجديد الطلب الاسم من السجل  
لغير هذه الشهادة اذ يحتمل ان يكون القانون رقم (١٩) لسنة ٢٠٠٦ بتعليم مزاولة المهنة الهندسية





**SERVICE PROVIDER  
LICENSE**

Expiry Date: 21 February 2024

Territory: Qatar

This is to certify that

**ICON CONSULTING ENGINEERING**

(License No. SPD-QA279-00281)

has been licensed as

**GSAS DESIGN & BUILD SERVICE PROVIDER**

**TYPE I - COMMON SCHEMES**

Commercial • Offices • Residential • Education • Mosques • Hospitality  
Homes • Light Industry • Interiors • Renovations • Camps & Festival Sites • Parks

by completing all requisites stipulated by  
the issuing organization.



**Dr. Yousef Mohammed Alhorr**  
Founding Chairman

This document is awarded subject to the licensee's compliance with the stated terms and conditions laid down by the Gulf Organisation for Research & Development (GORD).

[www.gord.qa](http://www.gord.qa)





المكتب الهندسي الخاص  
Private Engineering Office





# ICON

ARCHITECTS & ENGINEERS  
معماريون و مهندسون استشاريون

## HEAD OFFICE

Salwa Road | Zone-43 | Building 173 | Doha-Qatar  
Tel: +974 44179 104 | Fax: +974 4002 0247 | P.O.Box: 9370

## GENERAL INFO.

[info@icon-qa.com](mailto:info@icon-qa.com)

## WEBSITE

[www.icon-qa.com](http://www.icon-qa.com)

## TENDER

[gm@icon-qa.com](mailto:gm@icon-qa.com)

Scan Me  
for more Information

