



# Leading the Way in **Water Solutions** Excellence

Profile 2024

A subsidiary of  
 **Estithmar**  
استثمار القابضة Holding

► **Estithmar**  
Holding استثمر القابضة

# 4 Clusters



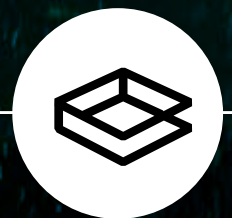
HEALTHCARE



SERVICES



VENTURES



CONTRACTING &  
INDUSTRIES

**Apex**  
Health

THE VIEW HOSPITAL  
KOREAN MEDICAL CENTER  
SYRIAN AMERICAN MEDICAL CENTER  
EWS - MEDICAL SERVICES CONSULTANCY  
ALGERIAN QATARI GERMAN HOSPITAL

► **elegancia**  
services

CATERING  
FACILITIES MANAGEMENT  
RESOURCES  
GABRO  
SUPPLY & TRADING  
ARABIA LIMITED

► **Estithmar**  
ventures

AL MAHA ISLAND  
MAYSAN DOHA  
KATARA HILLS  
EQUESTRIAN CLUB  
RIXOS BAGHDAD  
ROSEWOOD RANFARU MALDIVES

► **elegancia**  
contracting & industries

MEP  
LANDSCAPE  
**WATER SOLUTIONS**  
MARINE  
CONTRACTING  
KITCHENS  
CESCO  
STEEL  
JOINERY  
STONES  
SWITCHGEARS  
ARABIA TRADING  
MECHANICAL ENGINEERING - KSA

# Purpose

To add value to the society for a better lifestyle

## Vision

Creating a brighter future from Qatar to the world

## Values

Leadership  
Collaboration  
Accountability  
Quality  
Resilience

## Mission

We add exceptional value to our customers through the skills and knowledge of our employees

## Guiding Principles

Preserve Corporate Reputation  
Corporate Social Responsibility  
Develop Future Leaders  
Promote Innovation  
Inspire Trust  
Improve Agility

A subsidiary of

**Estithmar**  
Holding استثمـار القابضة

## ► elegancia water solutions

elegancia water solutions, a subsidiary of Estithmar Holding, is a 17-year-old, market-leading company that specializes in water-related projects encompassing Wellness & Pools, water features, and Water Management. With More than 6000 Water Related Element completed within the state of Qatar we have the in-house capabilities and resources to undertake and deliver turnkey projects from A to Z in the 3 interrelated fields in the role of a complex solution provider.

elegancia water solutions excels at handling of all water-related projects by adopting a Design - Develop - Execute & Maintain approach. As a result, the highest - class service is provided through a precisely planned process in a monitored and controlled environment so we meet deadlines, client's budget, and global quality standards. We believe that the path to top quality is via perfectionism. So far, it has helped us realize the most demanding projects.

A subsidiary of

► **Estithmar**  
Holding استثمارة القابضة

# +17

Years of Experience

# +6000

Completed Water Related Element

Elegancia Water Solutions a leading provider of comprehensive water management services, specializing in the design, implementation, and maintenance of advanced water treatment and distribution systems.

Committed to sustainability and innovation, the company offers tailored solutions for a wide range of applications, including residential, commercial, and industrial projects.



# Our Expertise



**WELLNESS & POOLS**



**WATER FEATURES**



**WATER MANAGEMENT**



## The Ultimate Spa Experience

We offer a complete turnkey solution covering:

- Conceptual design of swimming pools & SPA,
- Spa Consultancy,
- Supply of most modern equipment and SPA facilities,
- Build Phase - installation and project execution, covering a package of related MEP & civil works,
- After-sales support via specialized maintenance.

Successful delivering complete, valuable wellness solutions for hotel groups like Hilton, intercontinental, Kempinski and Ritz-Carlton has earned elegancia water solutions an enviable reputation. We are known as the creators of the ultimate SPA Experience.



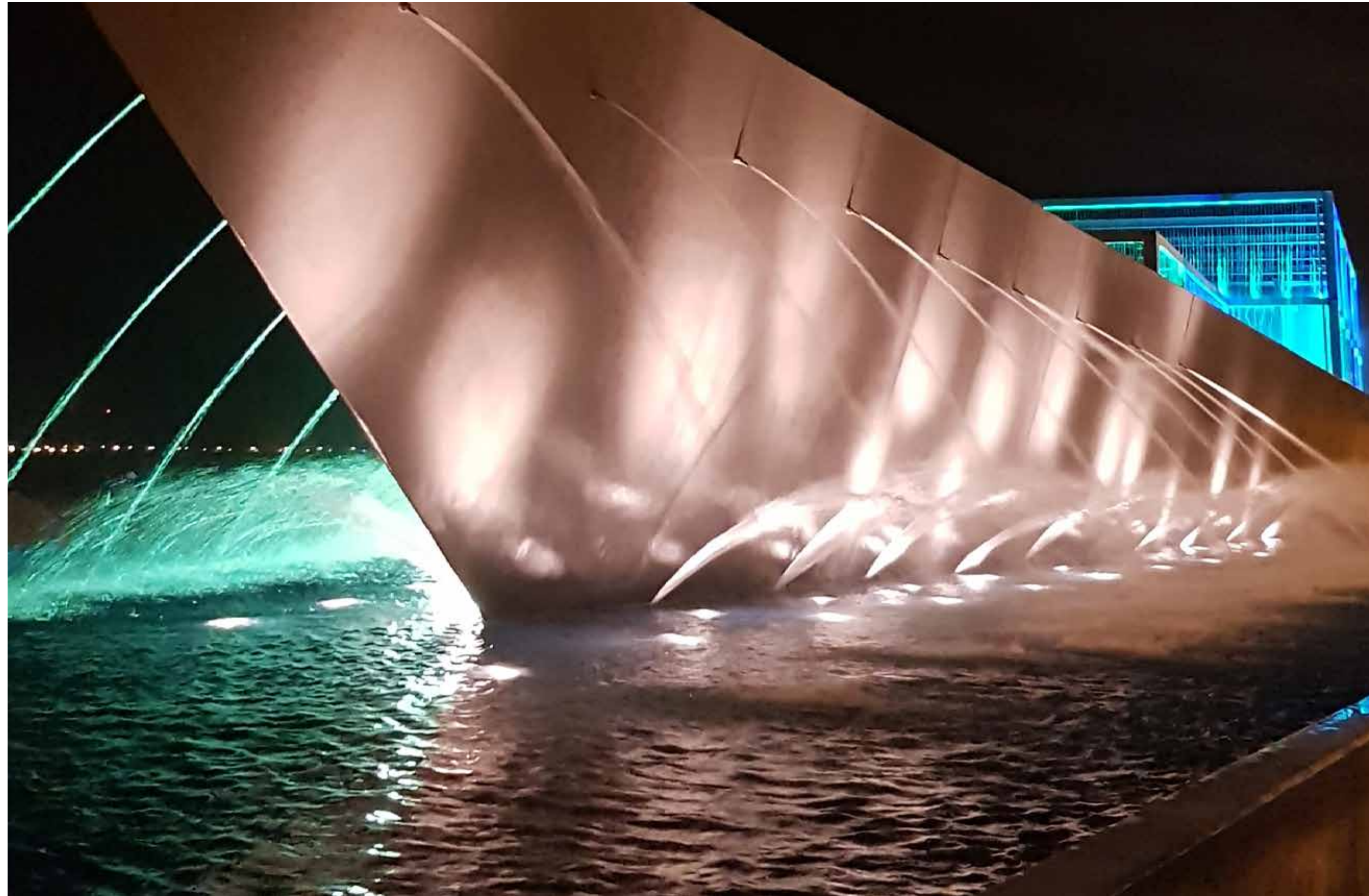
### Our scope of Products:

Swimming pools (Normal Pool, Olympic pool, Hydropool, Jacuzzi, Plunge Pool and Therapeutic pool)

- Hammam
- Sauna Rooms
- Steam Rooms
- Rasul mud rooms
- Salt Room
- Ice Fountains
- Snow Cabins
- Wet Treatment Rooms
- Experience Showers
- Relaxing Lounge

## Wellness & Pools

Our role is to develop an individual plan for each customer so that dreams for the perfect relaxation space can come true. We strive to make sure that the project design is tailor-made based on its designation, budget, time frame, legal restrictions, local culture and, most importantly, the needs, requirements and vision of its future users.



## Water Features

We believe that a water feature is more than just a visual experience. It always brings added value to the space, giving the location a certain function or usability via its form, flow, surface or setting, and substantially increasing its value at the same time. The main goal of our work is to capture the spirit of a place.

## A Memorable Water Show

Water feature development by elegancia water solutions includes:

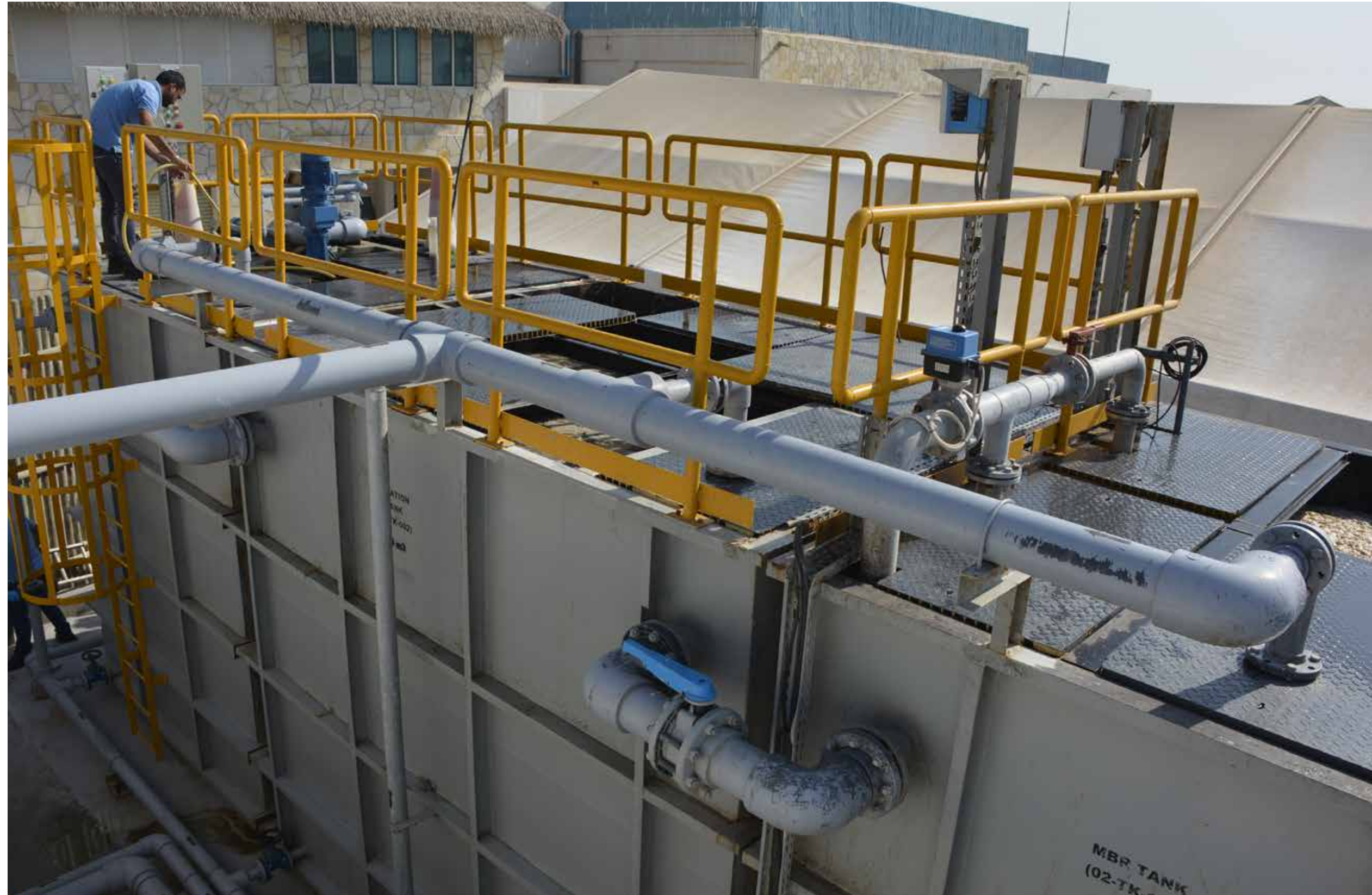
Conceptual design preparation based on a proposal that perfectly suits the character of the space, Animation proposal, Design development based on sustainable management of water as a resource Supply of the most technologically, covering a package of related MEP & civil works,

After-sales support via specialized maintenance and in house musical fountains programming.



### Our scope of products:

- Fountains
- Cascades & waterfalls
- Water mirrors
- Decorative water installations
- Interactive fountains with incorporated light & music
- Water shows with video & laser projection



## Water Management

We are mindful of the sustainable use of water, therefore we, constantly apply new technologies which help to generate water savings by recycling.

## We offer turnkey solution covering:

- Design of treatment system for optimized performance and cost- effective treatment,
- Plant supply, installation & commissioning,
- Plant operations,
- After-sales support via specialized maintenance, covering supply of spare parts and the application of chemicals to optimize efficiency, ensuring the longevity of equipment.



## A Safe Sustainable Solution

- Our complete cycle for remote areas with no utility infrastructure encompasses:
- Potable water provision via Reverse Osmosis,
- Sewage treatment process,
- Sustainable waste disposal, including TSE & sludge reuse strategy for additional revenue.



# Our Approach

We have a wide network of partners which enables us to use the latest technologies and globally recognized design solutions. Partnering with global suppliers not only allows us to be up to date with the leading trends and materials, but it also guarantees a world-class design that will remain attractive over time.

elegancia water solutions acts as a platform for leveraging international experience with a local, customized flavor, in accordance with culture and functionality.

We believe that synergy with partners is what leads to business excellence. Our wide network of international suppliers enables us to apply the latest technologies with the support of world-class experts.



# Our Services

As part of our ongoing strategy, we created a quality management system to deliver the best following services:



**Design Services**



**Execution Services**



**Maintenance Services**

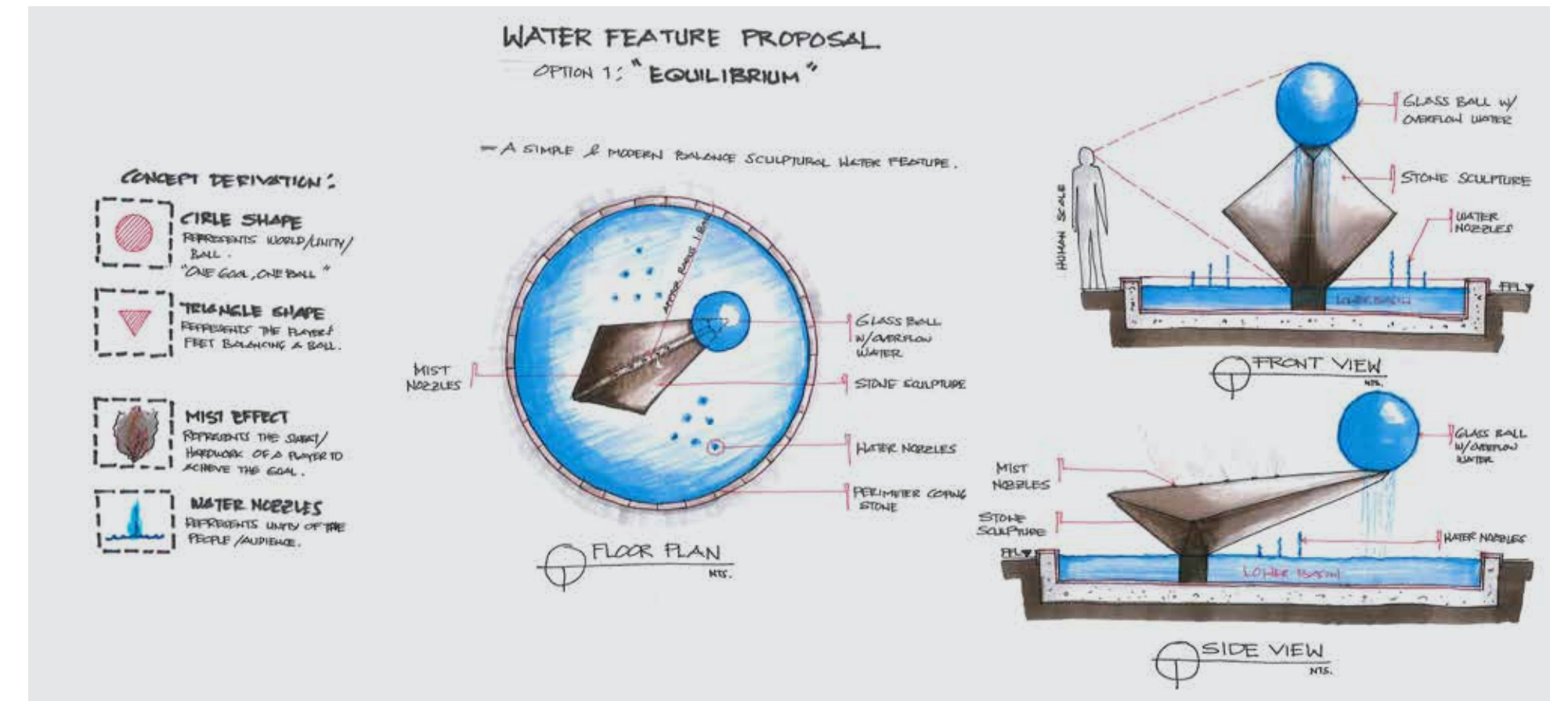
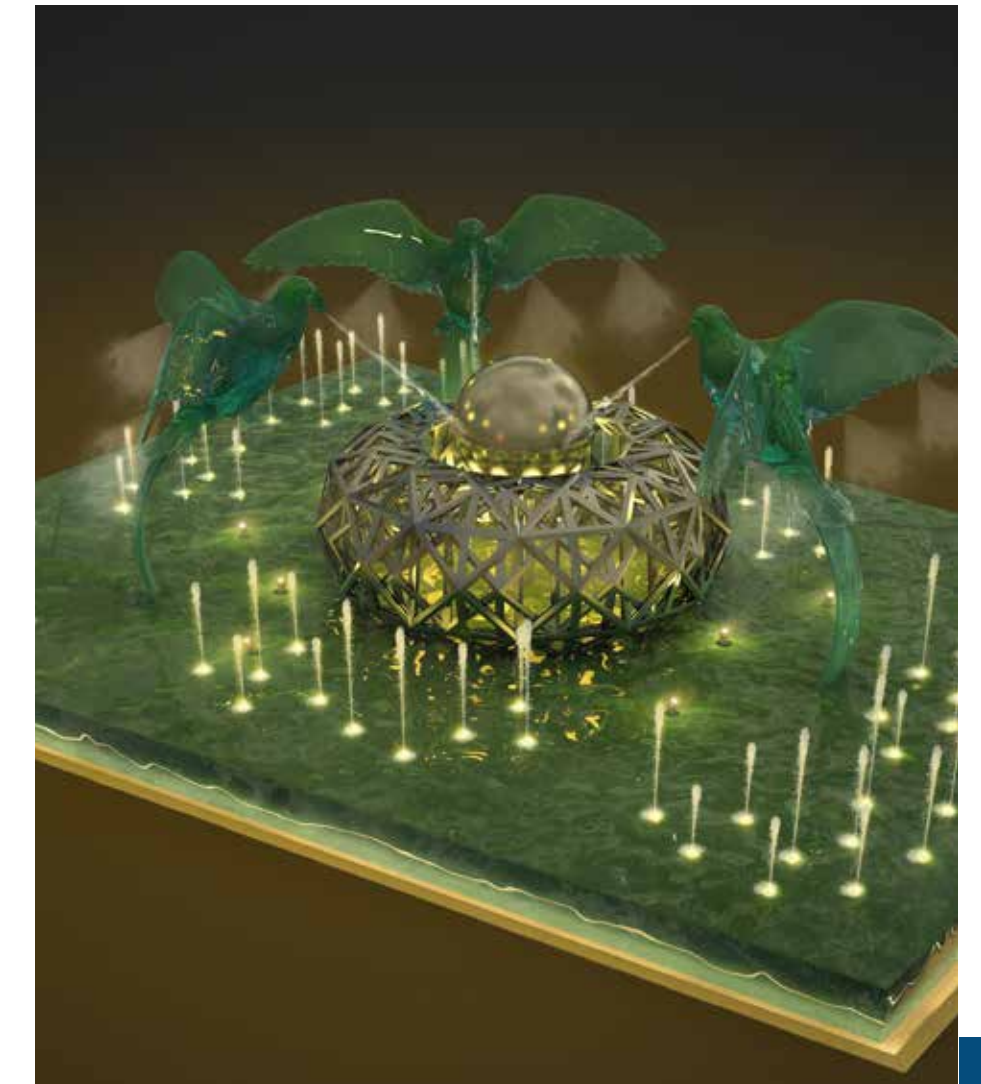


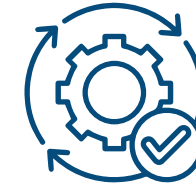
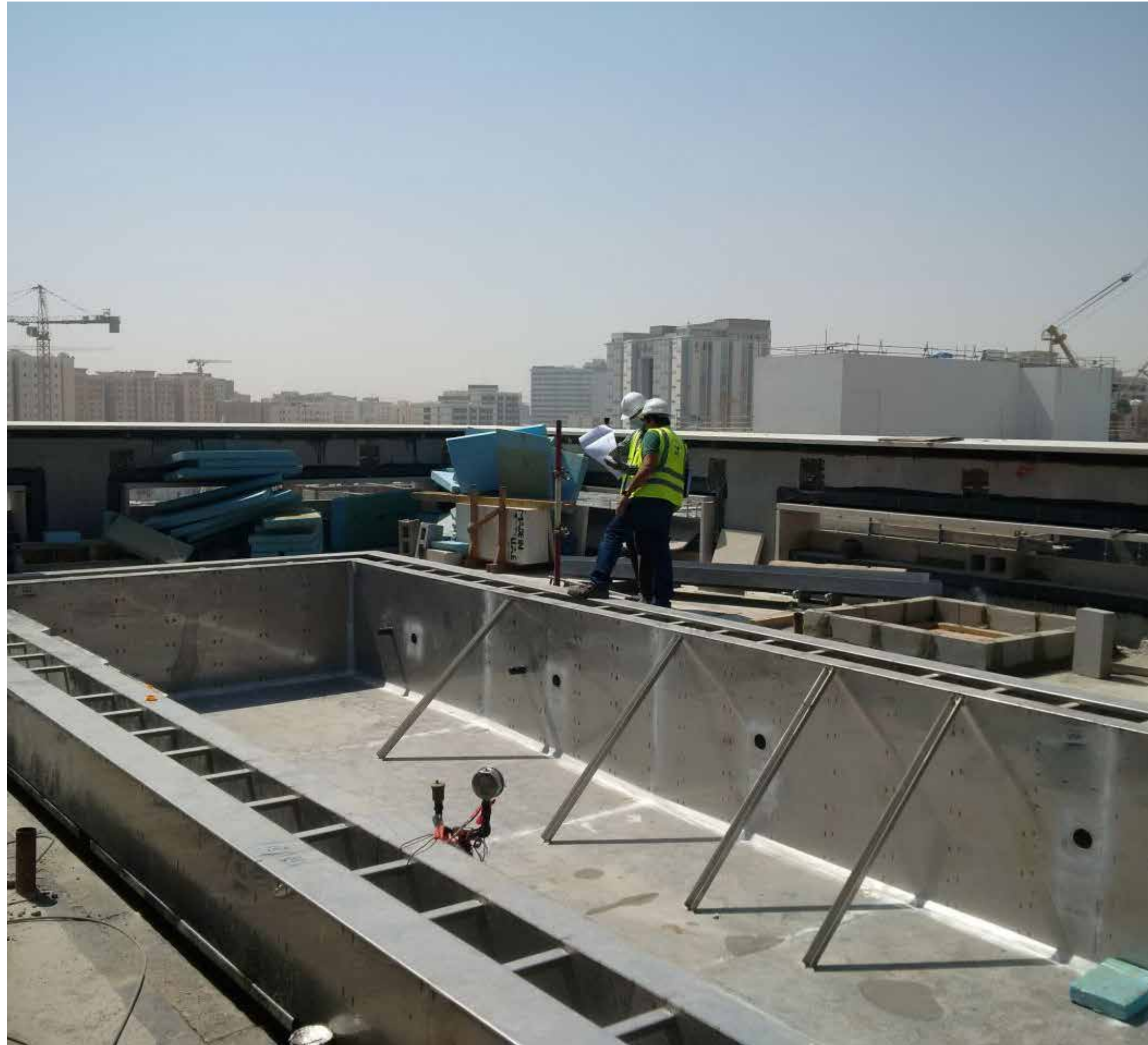
## Design Services

Our team supports architects and designers in designing and developing the water related elements in the project by providing the following to any project in all its disciplines.

From initial ideas to space planning, to spa circulation recommendation, we are there in all stages on the project design phase, by providing the following

- Sketches
- Conceptual Phase
- Design Proposals
- Tender Drawings



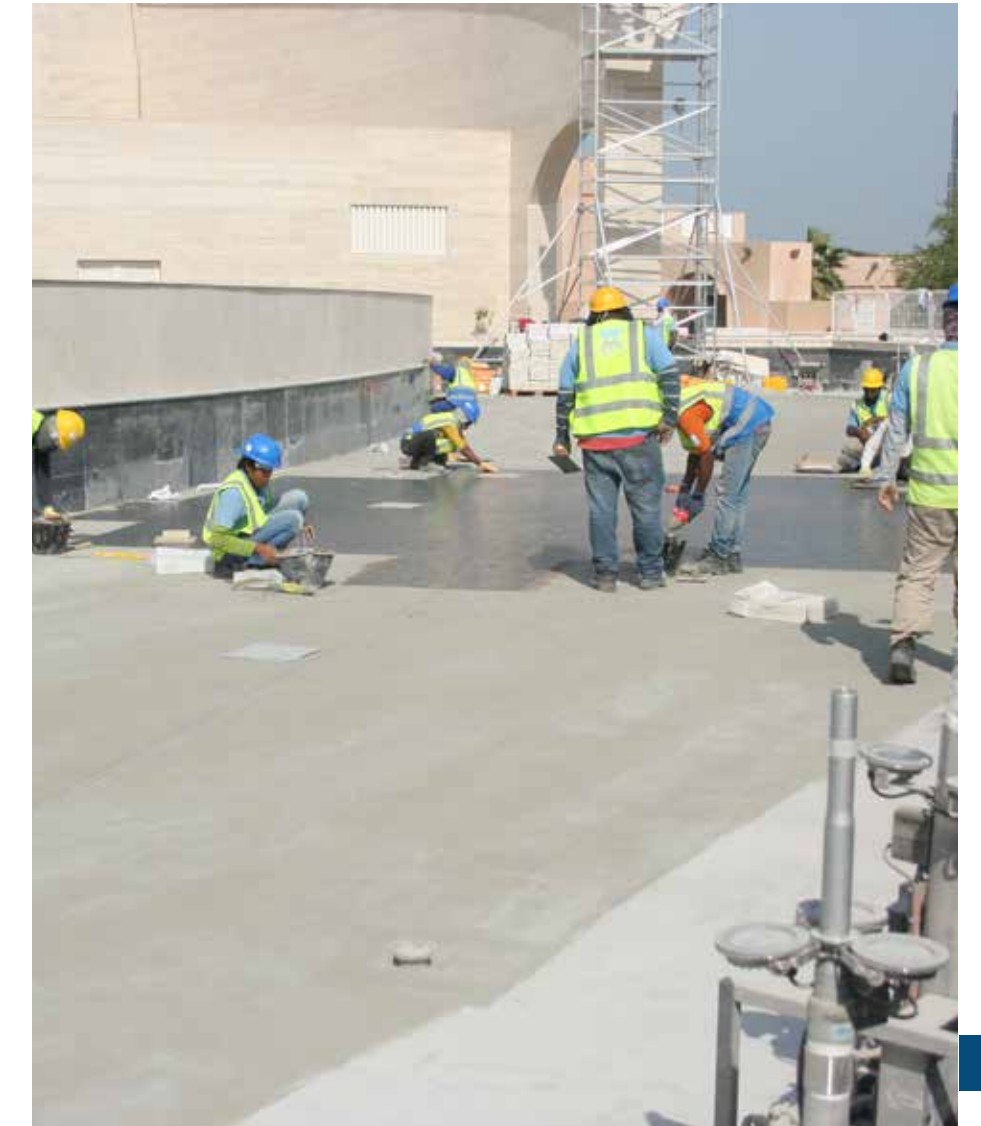


## Execution Services

We have all the related manpower inhouse to deliver a full turnkey solution.

Being a water specialist, elegancia water solutions shall cover all trades under the same roof, and therefore our team of professionals constitutes of architects, civil engineers and interior designers as well as mechanical, electrical and chemical engineers.

- Civil Works
- Electro-Mechanical Works
- Architectural / Finishing Works
- Fit-Out
- Lighting Works
- Carpentry

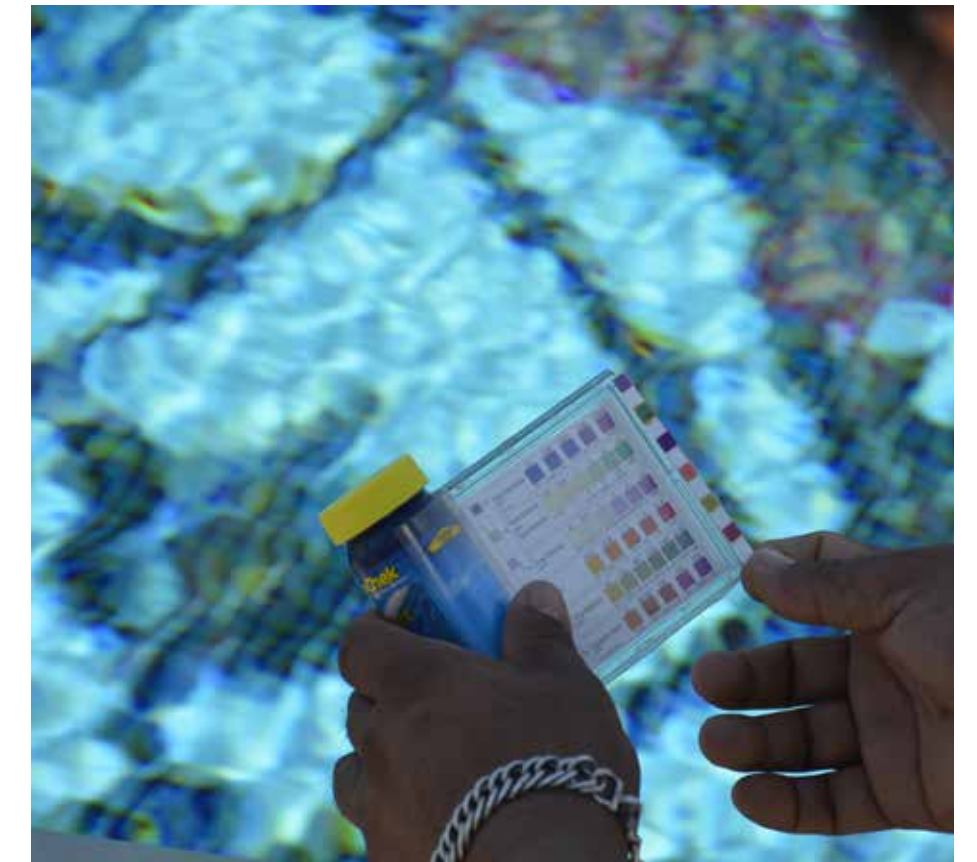




## Maintenance Services

Supported by years of experienced pool operators, and multi-talented specialists elegancia water solutions team after sales and maintenance team make sure that your water feature is sustainable and durable.

- Planned Preventive Maintenance
- Corrective Maintenance
- Vacuum & Cleaning
- Water Testing Analysis
- Operations Monitoring



# Our Works



**Wellness & Pools**



**Water Features**



**Water Management**



**Maintenance**

# Wellness & Pools

# Wellness & Pools

## WELLNESS & POOLS



### Kempinski Marsa Malaz

Kempinski Marsa Malaz 5\*Hotel Doha showcases the finest European architecture, combine with traditional Arabian Elements. Among them, there are several water installations bringing tranquility, relaxation and joy. A pool complex perfectly blends in with the sea surrounding the secluded island on which the hotel is located extending to the horizon.

#### SCOPE OF WORKS

- SUPPLY AND INSTALLATION OF ELECTRO-MECHANICAL WORKS FOR:
- 3 OUTDOOR POOLS TOTAL OF 800M2
- 3 INDOOR POOLS OF A TOTAL OF 150M2
- 2 ROYAL POOLS AT PRIVATE SUITES OF A TOTAL OF 80M2



## WELLNESS & POOLS



### Aspire Academy

Aspire academy a placed that has set to recognized as the world's leading sports academy in the development of youth athletes. As a representation of world class facility, aspire academy builds a unique, adequate and competitive pool and wellness facilities that increases to the general environment of holistic development, care and well-being that emanates from aspire academy.

**450m<sup>2</sup>**  
POOL AREA

**350m<sup>2</sup>**  
SPA AREA

### SCOPE OF WORKS

- 1. SUPPLY AND INSTALLATION OF ELECTRO-MECHANICAL WORKS FOR:
- 7 NOS. INDOOR STAINLESS STEEL POOLS
- A WELLNESS SPA AREA CONSISTING OF 5 NOS. OF SAUNA, STEAM, CORRIDOR JETS / SHOWERS & HEATED BENCH SHOWERS.
- 2. SUPPLY AND INSTALLATION OF FULL STAINLESS STEEL POOL FINISHES.
- 3. SUPPLY AND INSTALLATION OF WOOD SAUNA FINISHES.

► WELLNESS & POOLS



## La Cigale Hotel

La Cigale 5\* Hotel is one of the most prestigious addresses in Qatar that can cater the most relaxing retreat. Its 5\* amenities inspires exquisite relaxation and renewal throughout your stay in Doha.

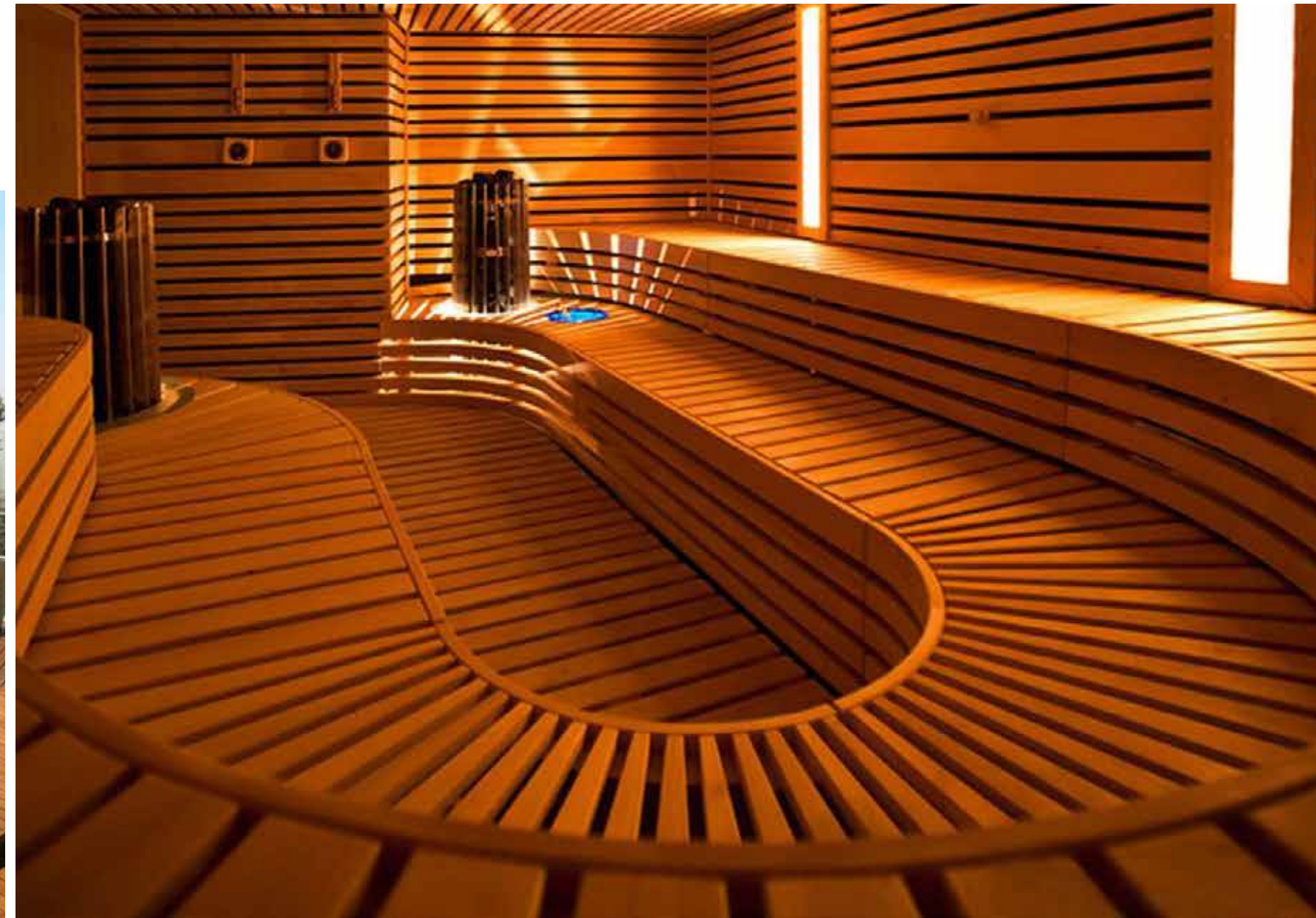
**300m<sup>2</sup>**  
POOL AREA

**1,000m<sup>2</sup>**  
SPA AREA

### SCOPE OF WORKS

- 1. SUPPLY AND INSTALLATION OF ELECTRO- MECHANICAL WORKS FOR:
- 1 NO. INDOOR SWIMMING POOL
- 1 NO. INDOOR JACUZZI
- 1 NO. ARABIAN STYLE HAMMAM ROOM.
- 2 NOS. SAUNAS
- 2 NOS. STEAMS

► WELLNESS & POOLS



## Torch Tower (Health Club)

Torch tower - health club is located in the heart of doha's majestic sports city complex, aspire zone qatar, built for wellness enthusiasts in search of innovative ways to relax and restore balance.

**2,000m<sup>2</sup>**  
HEALTH CLUB AREA

### SCOPE OF WORKS

- 1. TURNKEY, FIT-OUT RENOVATION WORKS FOR:
- OUTDOOR CANTILEVERED POOL
- MALE & FEMALE SPA:
- 2 NOS. SAUNAS
- 2 NOS. HAMMAM ROOMS
- 4 NOS. MASSAGE ROOMS
- 2 NOS. FITNESS GYM
- 6 NOS. EXPERIENCE SHOWERS
- 2 NOS. RELAXATION LOUNGES

## WELLNESS & POOLS



### Al Messila Luxury Collection Resort & Spa

A lavish destination nestled between desert sands and the vibrant buzz of the city of Doha, Al Messila, a Luxury Collection Resort & Spa, a 5\* resort that offers unparalleled lifestyle and epicurean experiences from its luxury villas with private pool, sparkly main outdoor pool and vast luxurious Spa areas.

**14,000m<sup>2</sup>**  
LUXURIOUS  
WELLNESS AREA

**1,540m<sup>2</sup>**  
POOL AREA

#### SCOPE OF WORKS

- SUPPLY AND INSTALLATION OF ELECTRO-MECHANICAL WORKS FOR:
- SWIMMING POOLS;
- 30 NOS. VILLA POOLS
- 1 NO. MAIN POOL
- 1 NO. KIDS POOL
- 1 NO. JACUZZI
- 1 NO. KIDS CLUB POOL
- 2 NOS. HYDROPOOL 1 & 2
- 1 NO. FLOATING POOL
- 1 NO. MAGNESIUM POOL
- 1 NO. LITHIUM POOL
- 1 NO. JOD POOL

#### SCOPE OF WORKS

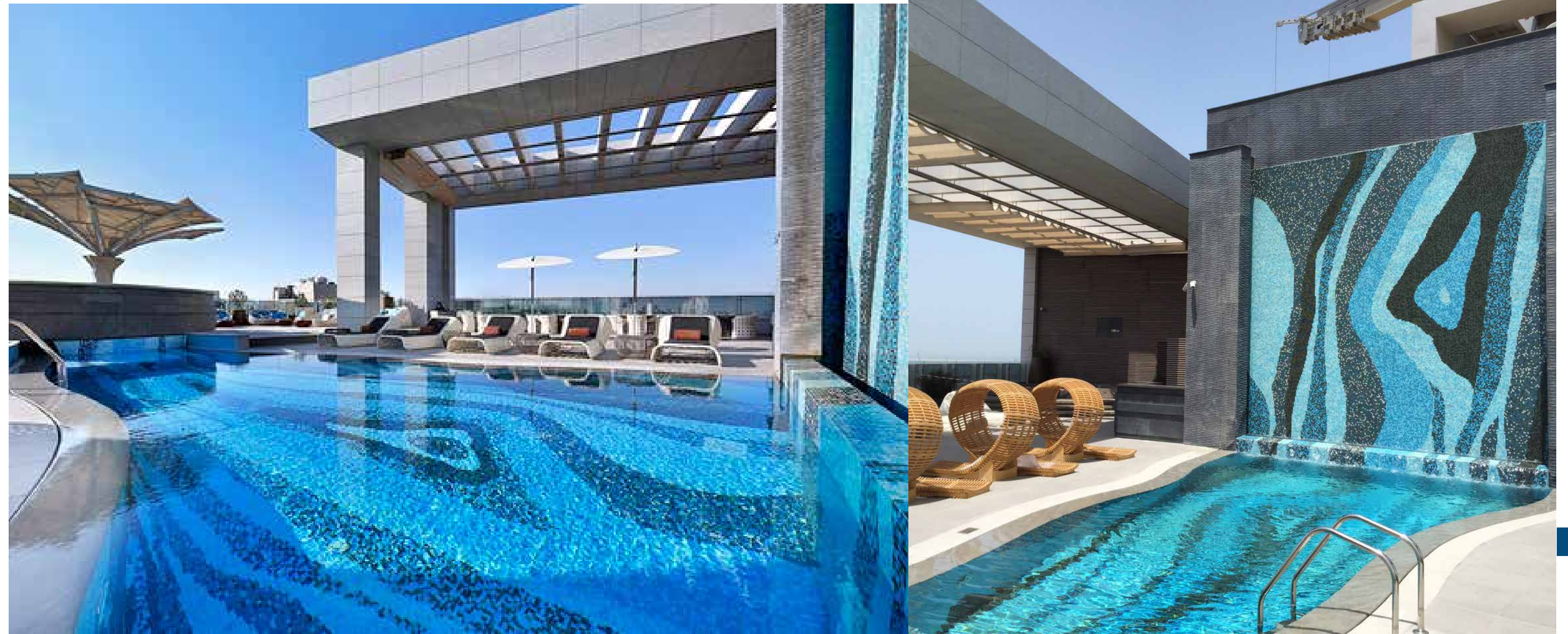
##### WELLNESS SPA:

- 6 NOS. MY SPA HEAVEN 1 TO 6 @ 1ST FLOOR TREATMENT ROOMS
- 2 NOS. VITALITY 2S STEAM BATH @ 1ST FLOOR TREATMENT ROOMS
- 2 NOS. STEAM SHOWER & HEATED BENCH POS 48 & 49 @ ORIENTAL WORLD
- 3 NOS. STEAM SCRUB ROOM POS 52, 53 & 54 @ ORIENTAL WORLD
- 1 NO. STEAM ROOM POS 55 @ ORIENTAL WORLD
- 1 NO. HAMMAM TABLE POS 56 @ ORIENTAL WORLD
- 1 NO. ICE FOUNTAIN POS 57 @ ORIENTAL WORLD
- 1 NO. STEAM SHOWER 3 POS 59 @ ORIENTAL

##### WORLD

- 1 NO. STEAM RASUL POS 60 @ ORIENTAL WORLD
- 1 NO. SHOWER WALK 01 POS 67 @ MYSTIC WORLD
- 1 NO. MYSTIC KNEIPP POS 68 @ MYSTIC WORLD
- 1 NO. MYSTIC DOME POS 69 @ MYSTIC WORLD
- 1 NO. MY SPA HEAVEN 08 POS 76 @ FLOWER WORLD
- 1 NO. HERBAL BATH POS 78 @ FLOWER WORLD
- 1 NO. HEATED BENCH POS 79 @ FLOWER WORLD
- 1 NO. SHOWER CORRIDOR POS 80 @ FLOWER WORLD
- 1 NO. ICE FOUNTAIN POS 81 @ FLOWER WORLD
- 1 NO. HARMONY 240C STEAM BATH POS 82 @ FLOWER WORLD
- 1 NO. HEATED BENCH POS 83 @ FLOWER WORLD
- 1 NO. PANORAMA FLOWER SAUNA POS 84 @ FLOWER WORLD
- 1 NO. HEATED BENCH POS 85 @ MINERAL WORLD
- 1 NO. SERIAL BATH POS 87 @ MINERAL WORLD
- 1 NO. OXYGEN ROOM POS 90 @ MINERAL WORLD
- 1 NO. SALT RELAX ROOM POS 91 @ MINERAL WORLD
- 1 NO. MINERAL CABIN POS 94 @ MINERAL WORLD
- 1 NO. STEAM ROOM POS 98 @ GROUND FLOOR
- 1 NO. INFRARED SAUNA POS 99 @ GROUND FLOOR
- 1 NO. SHOWER WALK POS 100 @ GROUND FLOOR
- 1 NO. HEATING BENCH POS 101 @ GROUND FLOOR
- 2 NOS. STEAM ROOM POS 102 @ GROUND FLOOR
- 2 NOS. EXPERIENCE SHOWER POS 103 @ GROUND FLOOR
- 2 NOS. SAUNA POS 104 @ GROUND FLOOR

► WELLNESS & POOLS



## Hilton Double Tree Hotel

Hilton Double Tree Hotel we're in the Old Salata district showcases its unique location for its clients, adding a relaxation spa and a pool amenities that serve and added exquisite experience.

**55m<sup>2</sup>**  
UNIQUE ROOF  
TOP POOL

**130m<sup>2</sup>**  
SPA AREA

### SCOPE OF WORKS

- SUPPLY AND INSTALLATION OF ELECTRO-MECHANICAL WORKS.
- SUPPLY AND INSTALLATION OF FINISHING WORKS.
- 1 NO. FREE FORM ROOF TOP SWIMMING POOL WITH WATERFALL.
- 2 NOS. MALE & FEMALE STEAM
- 2 NOS. MALE & FEMALE SAUNA
- 1 NO. ICE MACHINE

► WELLNESS & POOLS



## Intercontinental 5\* Hotel

Intercontinental 5\* Hotel is set along a sandy beach on the Persian Gulf, this regal hotel is exquisite location for relaxation that can experience luxury hotel spa treatments from its huge Spa Facility, such as 16 lavish treatment rooms and couple suites, private indoor pool, relaxation rooms, juice bar, sauna and Jacuzzi, and the unique Spa Wave Bed and Quartz Bed. All intricately design to give and pamper relaxation seekers.

**1,700m<sup>2</sup>**  
POOL COMPLEX  
AREA

**200m<sup>2</sup>**  
WELLNESS  
AREA

### SCOPE OF WORKS

- SUPPLY AND INSTALLATION OF ELECTRO-MECHANICAL & ARCHITECTURAL FINISHING WORKS FOR:

#### SWIMMING POOL;

- 4 NOS. INDOOR & OUTDOOR SWIMMING POOL
- 1 NO. COLD PLUNGE POOL
- 1 NO. JACUZZI

#### MALE & FEMALE SPA;

- 2 NOS. SAUNAS
- 4 NOS. STEAM ROOMS
- RENOVATION WORK FOR OUTDOOR SWIMMING POOL

## ► WELLNESS & POOLS



### Westin Hotel Spa

Westin Hotel Spa is a Turnkey installation of elegant treatment rooms with designated male & female zones. The location is also known as “Doha’s serene downtown sanctuary” a perfect place for having a satisfying relaxation within the city.

**320m<sup>2</sup>**  
POOL WELLNESS  
AREA

#### SCOPE OF WORKS

- SUPPLY AND INSTALLATION OF ELECTRO-MECHANICAL & ARCHITECTURAL FINISHING WORKS FOR:
- MALE & FEMALE SPA:
- 2 NOS. STEAM ROOMS
- 2 NOS. SAUNA ROOMS
- 2 NOS. HAMMAM ROOMS
- 2 NOS. COLD ROOMS
- 2 NOS. PLUNGE POOLS
- 2 NOS. JACUZZI



# Water Features

# Water Features



## ▶ WATER FEATURES



### Medina Centrale, The Pearl Qatar

Medina Centrale, The Vibrant Heart of The Pearl-Qatar precinct is a town square inspired by the charming ambience of the Mediterranean. With a mixture of public plazas, gardens, terraces, canopies and piazza. It is a residential destination that brings together the unique qualities and charm of the island. A Turnkey installation of uniquely outdoor water features adding the town square more lively charm from within.

**7 Nos.**  
TOTAL WATER  
FEATURE

#### SCOPE OF WORKS

- TURNKEY SUPPLY AND INSTALLATION OF CIVIL, ELECTRO-MECHANICAL & ARCHITECTURAL FINISHING WORKS FOR:
- WATER FEATURES:
- 1 NO. WF-01 ENTRANCE MUSICAL WATER FOUNTAIN
- 1 NO. WF-04 ROUNDABOUT SCULPTURAL FOUNTAIN
- 1 NO. WF-05 PLAZA WATER FEATURE
- 1 NO. WF-06 CENTRALE DRY FOUNTAIN
- 2 NOS. WF-07 A & B WALKWAY SPOUT FOUNTAINS
- 1 NO. WF-08 SPOUT WATER FEATURE

## ▶ WATER FEATURES



### Katara Amphitheater

Katara Amphitheater, is an open arena located on Katara cultural village features an interactive flaming fountain designed & built by elegancia water solutions. Proposed concept came from the idea of a flaming torch that was commonly used in ancient times in an amphitheater as a symbol of harmony. The fountain is 4 meters high and features a spectacular interplay of fire and water. Water jets are illuminated, offering a captivating show to the audience.

**440m<sup>2</sup>**  
WATER FEATURE  
AREA

#### SCOPE OF WORKS

- DESIGN & BUILD
- TURN KEY PROJECT
- SUPPLY & INSTALLATION OF CIVIL, ARCHITECTURAL AND ELECTRO MECHANICAL WORKS.
- GAS LINE WORK.
- FIRE ON WATER EFFECT

## ▶ WATER FEATURES



## Sidra Medical & Research Center

Sidra Medicine is a state-of-the-art facility committed to providing women and children in Qatar with world-class tertiary healthcare services. Design & Installed uniquely water feature masterpieces that blends to the artistically design building.

**7 Nos.**  
TOTAL INTERNAL  
WATER FEATURE

**31 Nos.**  
EXTERNAL  
WATER FEATURE

### SCOPE OF WORKS

- DESIGN & BUILD PROJECT
- SUPPLY AND INSTALLATION OF ELECTRO-MECHANICAL WORKS FOR:
  - INTERNAL WATER FEATURES:
    - 1 NO. HEALING GARDEN 1 WATER FEATURE
    - 1 NO. HEALING GARDEN CENTRE WATER FEATURE
    - 1 NO. HEALING GRADEN NORTH WATER FEATURE
    - 1 NO. CONSERVATORY WATER FFEATURE
    - 1 NO. CLINIC WATER FEATURE
    - 1 NO. MOUSALLA WATER FEATURE 10
    - 1 NO. OCULUS WATER FEATURE

### SCOPE OF WORKS

#### EXTERNAL WATER FEATURES:

- 4 NO. 44METER LONG WATERFALL
- 19 NO CIRCULAR FEATURES WITH GLASS COLUMNS
- 4 NO CIRCULAR FEATURES WITH CANOPY LEAF STRUCTURE
- 1 NO REFLECTING POND WITH FLOATING TREE EFFECT
- 1 NO. WATER WALL EFFECT
- 1 NO WATER FEATURE WITH VERTICAL JETS AT HOSPITAL ENTRANCE
- 1 NO WATER FEATURE WITH MIRACULOUS JOURNEY SCULPTURE BY ARTIST DAMIEN HIRST.

## ▶ WATER FEATURES



### Al Bayt Stadium Complex

The Al Bayt Stadium is located in the city of Al Khor, in northern Qatar. It's one of the World Cup's main stadiums, has a total capacity of 60,000, and will be used to host the opening game, as well as subsequent matches up to the semi-finals. Al Bayt Stadium is fashioned to replicate the bayt al shayr, the tents historically used by the nomadic people of Qatar. Enhancing the well design water features in the complex elegancia water solutions provides its specialties on managing to provide a well-executed water features.

**4 Nos.**  
EXTERNAL LAKES WITH OVER  
24,000CUM OF WATER

**31 Nos.**  
WATER FEATURE  
WITHIN COMPLEX

#### SCOPE OF WORKS

SUPPLY AND INSTALLATION OF ELECTRO-MECHANICAL WORKS FOR:

- 4 NOS. EXTERNAL LAKE FEATURES 1 TO 4
- 1 NO. FLOATING TREES WATER FEATURE
- 1 NO. SHEAR DROP DOWN WATER FEATURE
- 5 NOS. TYPICAL STAIR AT RAMP WATER FEATURE
- 1 NO. WATER CASCADE WITH STEP

## ▶ WATER FEATURES



## Msheireb Downtown Doha

Msheireb Downtown Doha is a unique modern area with contemporary architecture, gleaming white mosques, and a cluster of history museums housed in elegant, Arabic-style mansions, hotel & residential towers. elegancia water solutions gives its specialty service on giving the highest considerations on the intended concept for the development of the landscape area with regards to its water features elements.

**6 Nos.**  
PHASE 1A  
WATER FEATURE

**27 Nos.**  
PHASE 1B  
WATER FEATURE

**27 Nos.**  
PHASE 3 POOLS  
& WATER FEATURE

## SCOPE OF WORKS

- SUPPLY & INSTALLATION OF ARCHITECTURAL, CIVIL & ELECTRO-MECHANICAL WORKS.

### PHASE 1A;

- 1 NO. BEYT JELMOOD WATER FEATURE
- 2 NOS. COMPANY HOUSE WATER FEATURE
- 1 NO. MOHAMMAD BIIN JASSIM WATER FEATURE
- 1 NO. ARCHIVE WATER FEATURE
- 1 NO. MOSQUE AUTOCOURT WATER FEATURE

### PHASE 1B;

- 4 NOS. BLDG. I-17 CLUB LOUNGE WATER FEATURE
- 2 NOS. BARAHA SQUARE WATER FEATURE A & B
- 2 NOS. BARAHA SQUARE WATER FEATURE C & D
- 1 NO. BARAHA SQUARE WATER FEATURE E
- 1 NO. AL FERJAN WATER FEATURE
- 4 NOS. BLDG. I-02 INTERNAL COURTYARD WATER

### FEATURE A-B-C-D

- 1 NO. BLDG. I-02 REFLECTING WATER FEATURE A
- 4 NOS. BLDG. I-08 INTERNAL COURTYARD WATER

### FEATURE A-B-C-D

- 1 NO. BLDG. I-08 REFLECTING WATER FEATURE B
- 1 NO. BLDG. I-08 RAMP FOUNTAIN WATER FEATURE C
- 4 NOS. BLDG. I-09 INTERNAL COURTYARD WATER

### FEATURE A-B-C-D

- 1 NO. BLDG. H-05 WATER FEATURE

### PHASE 3;

- - 6 NOS STAINLESS STEEL POOLS
- - 1 NO. MOSQUE WATER FEATURE A
- - 4 NOS. WADI WATER FEATURE B-C-D-E
- - 1 NO. E BLOCK WATER FEATURE F
- - 1 NO. BLDG. I-09 REFLECTING WATER FEATURE E

# Water Management

# Water Management

## ▶ WATER MANAGEMENT



### Manateq – Al Wakra Logistic Park Phase 1 (Sewage Treatment Plant)

The Sewage Treatment Plant is designed to treat domestic wastewater (Sewage) generated from Logistic Park, parcel A. The Treated Sewage Effluent (TSE) is used for the landscape and Irrigation purpose along the corridors, roundabouts and buffer areas within the park as per the statutory standards

**6000m<sup>3</sup>/DAY**  
STP SYSTEM

#### SCOPE OF WORKS

- DESIGN & BUILD PROJECT
- MBBR SEWAGE TREATMENT PLANT WITH SLUDGE DEWATERING SYSTEM, SLUDGE DRYER AND AN AUTOMATIC PACKING MACHINE.
- PROVIDE MAINTENANCE STP SYSTEM.

▶ WATER MANAGEMENT



## Banana Island (Reverse Osmosis & Sewage Treatment Plant)

The scope of work is to manage the full operation and maintenance activities of 3 Nos. Reverse Osmosis plants, 2 Nos. Sewage Treatment Plants, Domestic waterline network, Sewerage network and Pumping/Lifting stations within the island.

**1,350m<sup>3</sup>/DAY**  
RO SYSTEM

**6000m<sup>3</sup>/DAY**  
STP SYSTEM

### SCOPE OF WORKS

- COMPREHENSIVE MAINTENANCE SERVICE.
- MBR SEWAGE TREATMENT PLANT WITH SLUDGE DEWATERING SYSTEM, SLUDGE DRYER AND AN AUTOMATIC PACKING MACHINE.
- PROVIDE MAINTENANCE RO & STP SYSTEM.



## ▶ WATER MANAGEMENT



### Labor Camp (Reverse Osmosis & Sewage Treatment Plant)

**2,250m<sup>3</sup>/DAY**  
RO SYSTEM

**2,000m<sup>3</sup>/DAY**  
STP SYSTEM

#### SCOPE OF WORKS

- DESIGN & BUILD PROJECT
- MBBR SEWAGE TREATMENT PLANT WITH SLUDGE DEWATERING SYSTEM, SLUDGE DRYER AND AN AUTOMATIC PACKING MACHINE.
- PROVIDE MAINTENANCE FOR RO & STP SYSTEM.



Maintenance

Maintenance

## ► MAINTENANCE

Al Bayt Stadium Complex

Aspire Zone

Msherib Downtown

Banana Island

The Pearl Qatar

Katara Cultural

Qatar Foundation

Lusail Marina Promenade





▶ **elegancia**  
water solutions

A subsidiary of

▶ **Estithmar**  
استثمار القابضة Holding